

Pressure relief valves

SDD 910



PPG body / PP union



PVDF body and union



PPG body / PVC union

- Small dimensions, easy integration
- All wetted parts in plastic
- Protection of pumps and process lines
- Body parts: PPG or PVDF
- Diaphragm : EPDM or FPM
- Adjustable from 0.5 to 6 bar
- From ND 10 to ND 15

APPLICATION and FITTINGS

Pressure relief valve SDD 910 limits the static pressure to a constant and maximal settled value by opening the outlet (to the discharge line) when the pressure is overriding. A diaphragm separates the mechanical parts body and the channel. All wetted parts are in plastics. The diaphragm and seat seal are in EPDM or FPM according to the model.

The SDD 910 valves may be used as pressure relief valves on dosing or volumetric pumping system:

- for keeping preset working pressure constant on the primary side
- for ensuring constant dosing quantities in conjunction with oscillating pumps

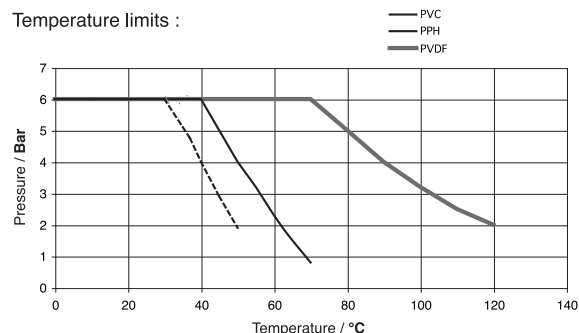
These equipment protection devices may be fitted in any position, in line, or on by-pass according to the application.

The top handle, faucet like, allows the operator to adjust the working pressure without tools. On request SDD 910 may be provided with a simple cover and adjustment may be done with a BTR key.

TECHNICAL FEATURES

| | |
|---------------------|--|
| Body, wetted parts: | PPG (glass fibre reinforced) or PVDF |
| Diaphragm: | EPDM or FPM |
| Union seals: | EPDM or FPM |
| Upper cover: | PPG |
| Spring: | Stainless steel |
| Bolt accessories: | Stainless steel |
| Fitting threads: | Brass, female M5; 2 inserts on bottom plate |
| Nominal diameter: | ND 10 & ND 15 |
| Pressure: | Adjustable from 0.5 to 6 bar |
| Hysteresis: | Approx. 0.3 bar |
| Connections: | PVC unions, solvent welding PPH or PVDF to weld on site |

Temperature limits :



BAMO MESURES

22, Rue de la Voie des Bans - Z.I. de la Gare - 95100 ARGENTEUIL

Tél : (+33) 01 30 25 83 20 - Web : www.bamo.fr

Fax : (+33) 01 34 10 16 05 - E-mail : info@bamo.fr

Pressure relief valves
SDD 910

03-12-2014

910 I1 01 A

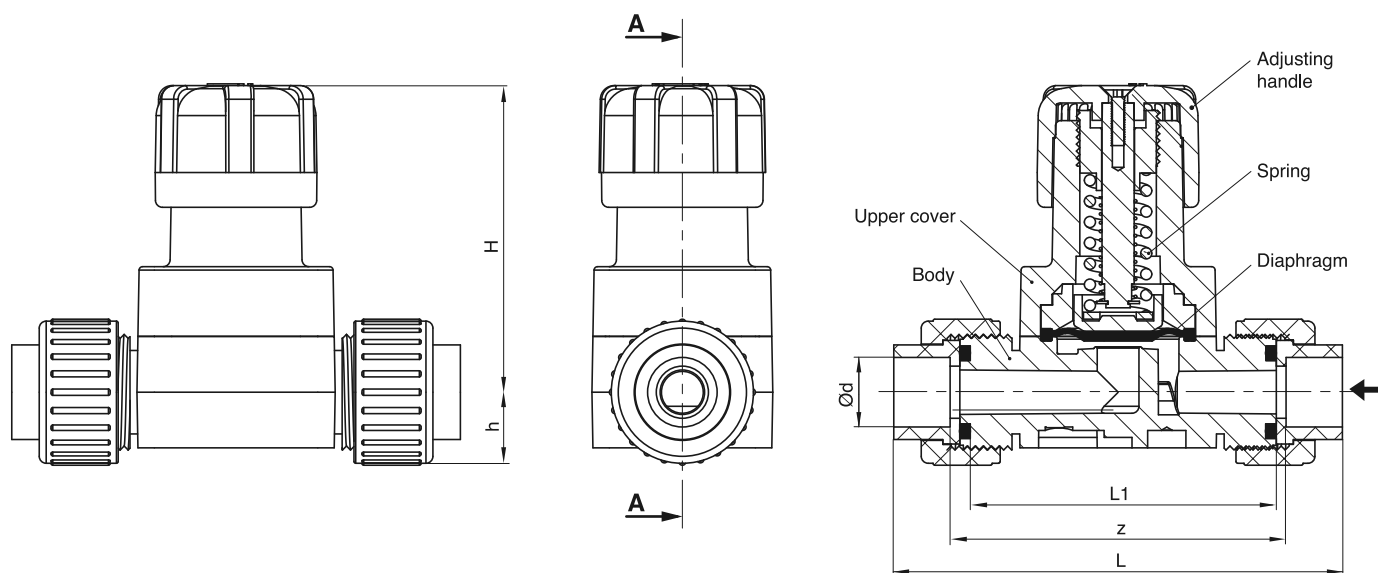
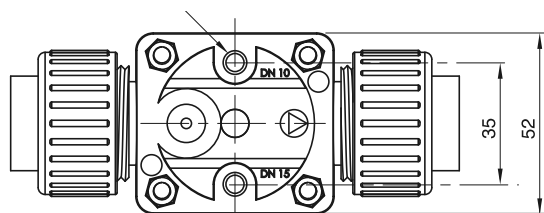
PLAS

910-01/1

910

CODES NUMBER & DIMENSIONS

| Code | ND | Body / Unions | Diaphragm & Seals | L | H | d | h | L1 | z |
|---------|-------|---------------|-------------------|-------|----|----|----|----|------|
| 910 001 | ND 10 | PPG / PVC | EPDM | 124.5 | 89 | 16 | 18 | 91 | 97.5 |
| 910 002 | ND 15 | PPG / PVC | EPDM | 128 | 89 | 20 | 23 | 91 | 98 |
| 910 011 | ND 10 | PPG / PVC | FPM | 124.5 | 89 | 16 | 18 | 91 | 97.5 |
| 910 012 | ND 15 | PPG / PVC | FPM | 128 | 89 | 20 | 23 | 91 | 98 |
| 910 101 | ND 10 | PPG / PP | EPDM | 124.5 | 89 | 16 | 18 | 91 | 97.5 |
| 910 102 | ND 15 | PPG / PP | EPDM | 128 | 89 | 20 | 23 | 91 | 98 |
| 910 111 | ND 10 | PPG / PP | FPM | 124.5 | 89 | 16 | 18 | 91 | 97.5 |
| 910 112 | ND 15 | PPG / PP | FPM | 128 | 89 | 20 | 23 | 91 | 98 |
| 910 211 | ND 10 | PVDF / PVDF | FPM | 124.5 | 89 | 16 | 18 | 91 | 97.5 |
| 910 212 | ND 15 | PVDF / PVDF | FPM | 128 | 89 | 20 | 23 | 91 | 98 |



FLOW RATE LIMITS

| ND | Flow (L/h)* | Kv (L/h)** |
|-------|-------------|------------|
| ND 10 | 900 | 1920 |
| ND 15 | 2000 | 2560 |

* Measured maxima according to a fluid speed of 3 m/s approx. The speed of 3 m/s may be considered as a maximum. Above 3 m/s the plastic devices will be damaged.

** For water at 20°C

BAMO MESURES

22, Rue de la Voie des Bans - Z.I. de la Gare - 95100 ARGENTEUIL

Tél : (+33) 01 30 25 83 20 - Web : www.bamo.fr

Fax : (+33) 01 34 10 16 05 - E-mail : info@bamo.fr

Pressure relief valves
SDD 910

03-12-2014

910 I1 01 A

PLAS

910-01/2