

MAXIMAT® LW CN-SDR

Compact leakage sensor for double wall pipe



INSTRUCTION MANUAL

BAMO MESURES

22, Rue de la Voie des Bans - Z.I. de la Gare - 95100 ARGENTEUIL
Tél : (+33) 01 30 25 83 20 - Web : www.bamo.fr
Fax : (+33) 01 34 10 16 05 - E-mail : info@bamo.fr

Compact leakage sensor
MAXIMAT® LW CN-SDR

04-01-2008

555 M1 04 B

MES

555-04/1

CAUTION

Trained personnel may only perform installation, initial start-up and maintenance.

All applicable European and national regulations regarding installation of electrical equipment must be adhered to.

- The device may only be connected to supply power complying with the specifications included in the technical data and on the serial plate.
- Do not dismantle or open the instrument.
- The device must be disconnected from all sources of power during installation and maintenance work!
- The device may only be operated under the conditions specified in the operating instructions!

TECHNICAL FEATURES

Supply power: 24 V DC \pm 10% (power supply with current limiting or 250 mA fuse recommended)
Connected load: Approx. 3 W
Ambient temperature: -20 to +60°C
Container pressure: Atmospheric (0.8 to 1.1 bar)

Outputs:
+DO / -DO: NPN max. 30 mA / max. 24 V DC
+AO / -AO: 0 to 20 mA

CE mark:

In accordance with low-voltage directive (73/23/EWG), EMC directive (89/336/EWG).

DIBT Approval

Approval N° Z-65.40-316 for overflow sensors and leakage sensors in accordance with WHG §19

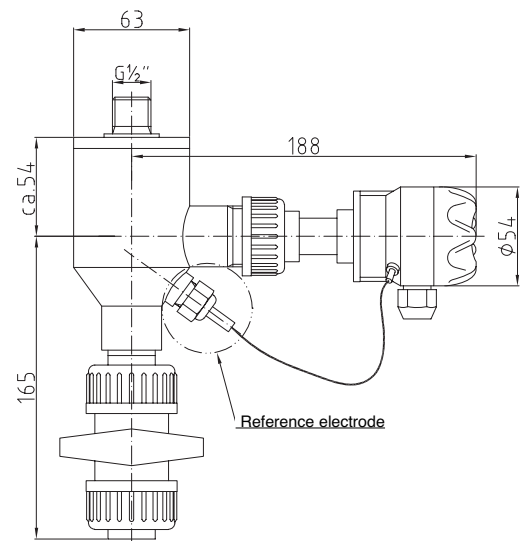
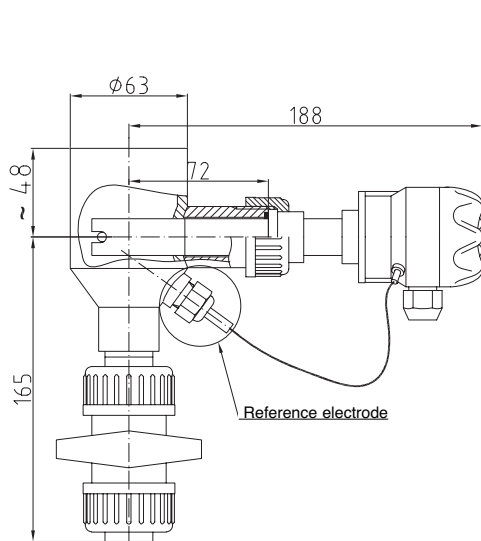
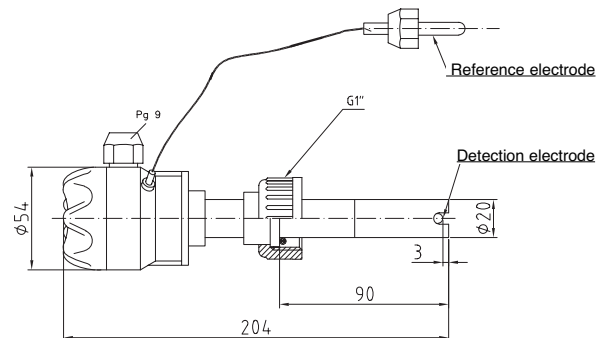
MAINTENANCE

In normal conditions of use, no maintenance is necessary.

Clean the probe once an alarm has occurred.

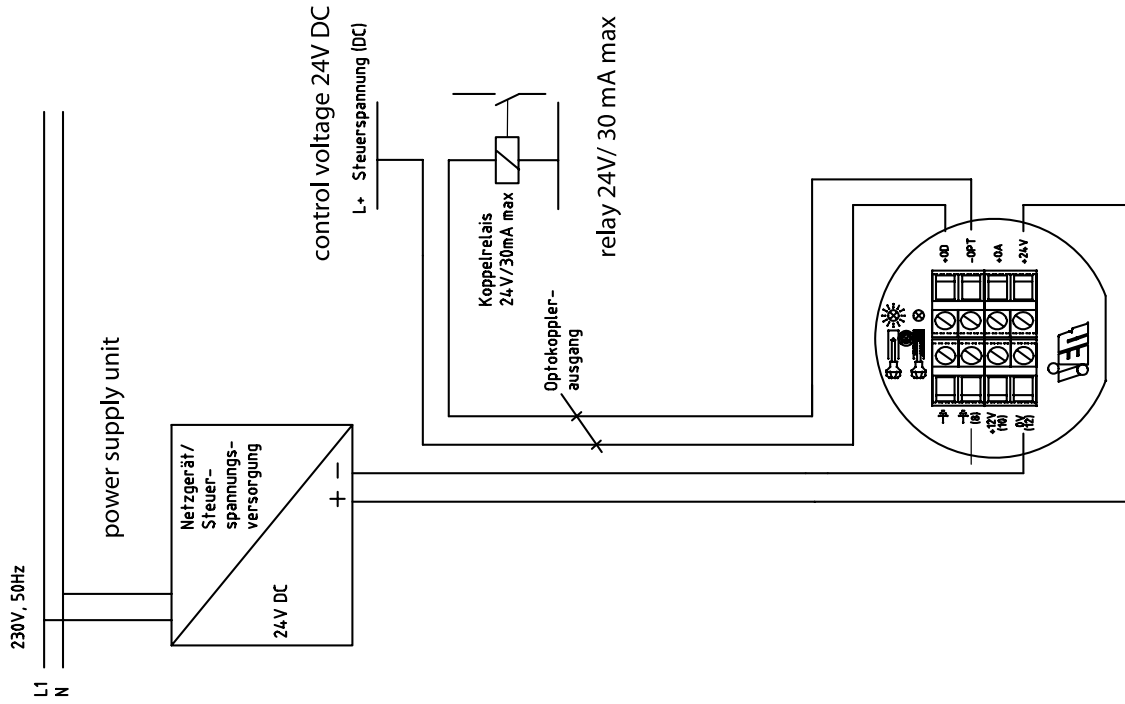
CARACTERISTIQUES MECANIQUES :

Stem length: 90 mm from sealing surface
Connection: BSP 1"
Ambient temperature: -20°C ...+60° C
Housing: IP65, with PG9
Fluid temperature: -5°C ...+60°C
Electrodes: in glass-carbon (handle with care)

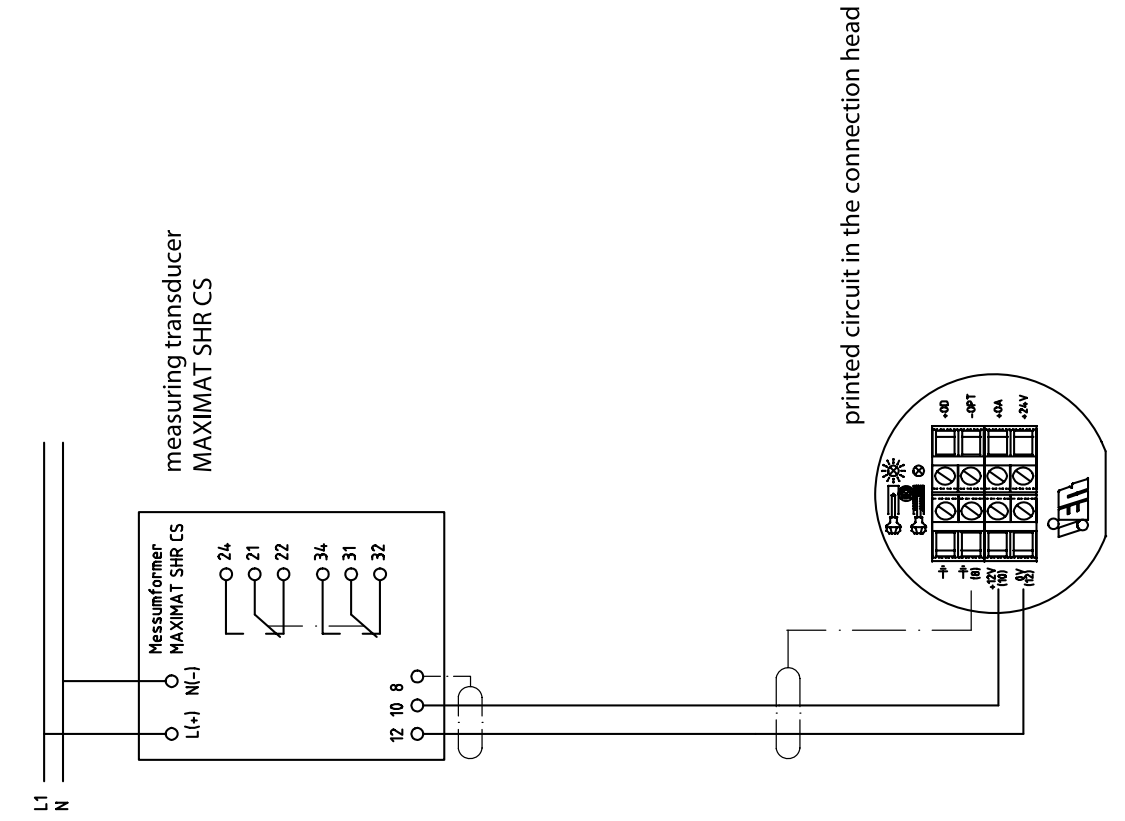


ELECTRICAL CONNECTION

operation with MAXIMAT SHR CS



operation with coupling relay



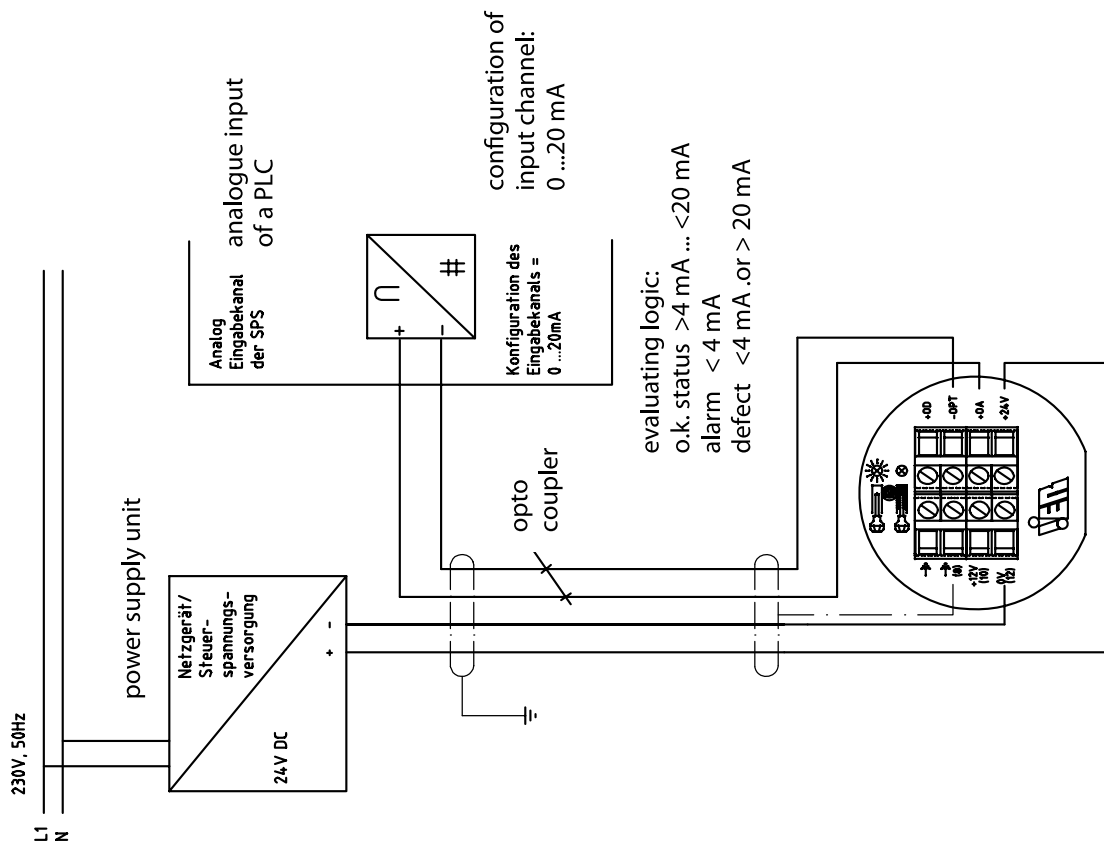
Leakage detector in use with digital output and relay

Status	Output	Led [internal]
No liquid in contact	High level	Lighting
Fluide in contact	Low level	OFF

Leakage detector in use with a MAXIMAT SHR C

Status	Output	Led [internal]
No liquid in contact	Relay ON	Lighting
Fluide in contact	Relay OFF	OFF

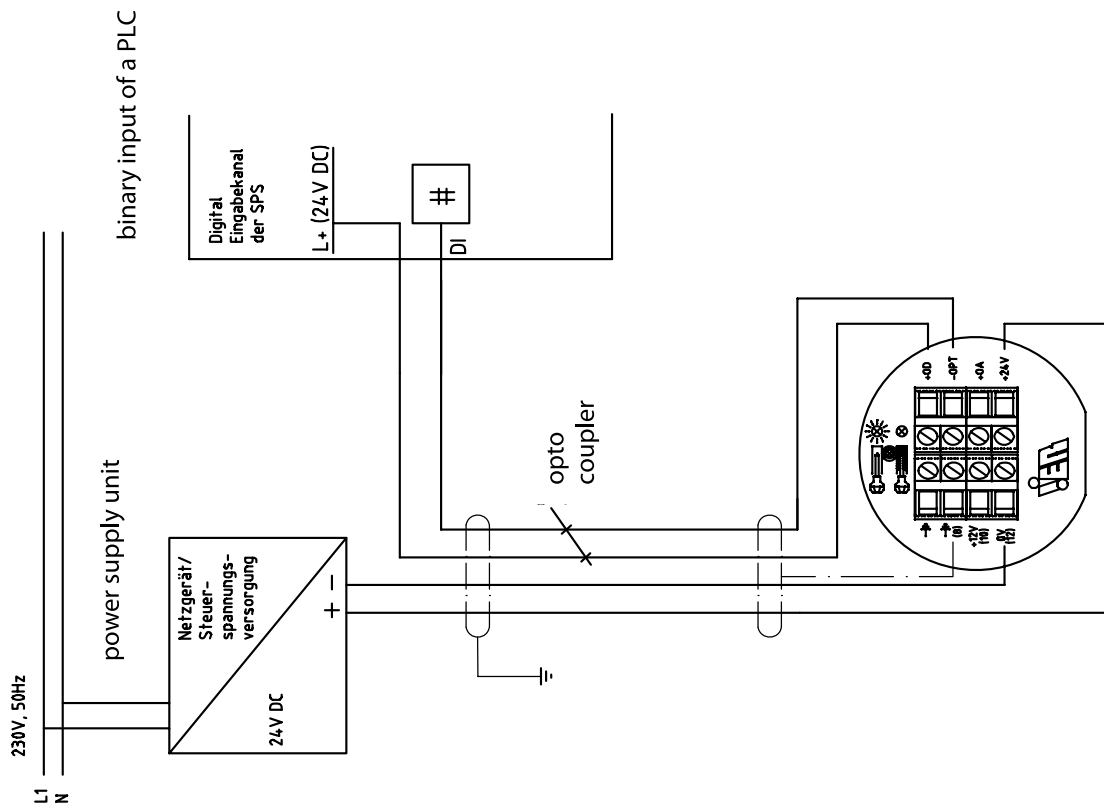
operation with analogue input of a PLC



Leakage detector in use with analogue output

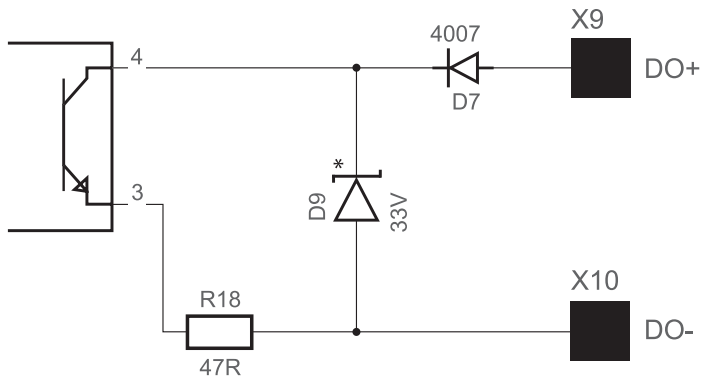
Status	Output	Led [internal]
No liquid in contact	4>...i...<20 mA	Lighting
Fluide in contact	0 mA	OFF

operation with binary input of a PLC



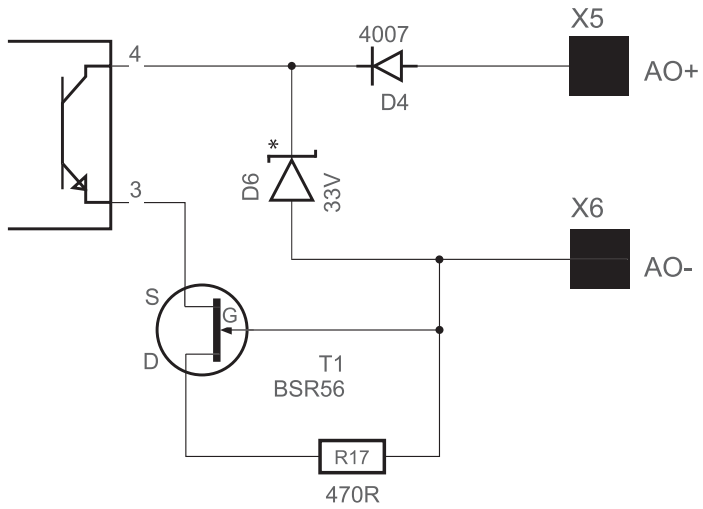
Leakage detector in use with digital output and PLC

Status	Output	Led [internal]
No liquid in contact	High level	Lighting
Fluide in contact	Low level	OFF



Digital output
+DO / -DO
NPN max. 30 mA

MAXIMAT



Analog output
+AO / -AO
0 to 20 mA