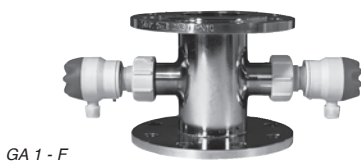


Armatures for turbidity control

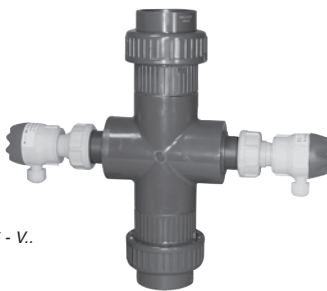
TURBISWITCH GA 1 / GA 5 / GA 11



GA 1 - F



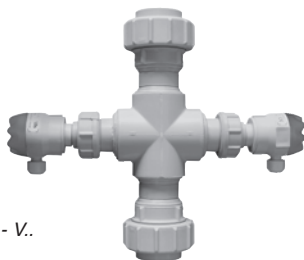
GA 1 - Z.



GA 5 - V..



GA 5 - F.



GA 5 - V..



GA 11 - F..

- Sensor fixture with emitter and receiver
- Associated with turbidity controller **TURBISWITCH GS4**
- DN15 up to DN100
- By-pass or in line mounting
- Housings in PVC, PPH, STAINLESS STEEL

DESCRIPTION

TURBISWITCH GA armatures are supplied with an emitter and a receiver, dedicated to turbidity detection. Emitters and receivers must be mounted on the specific armatures, to have a good beam alignment. With the help of its adjustable threshold TURBISWITCH GS4 controller gives you the warranty of good detection quality. TURBISWITCH GA armatures can be mounted as in-line as in by-pass with diameters from DN15 up to DN100.

A complete turbidity system includes:

- 1 turbidity controller TURBISWITCH GS4 (see data. 410-02)
- + 1 turbidity armature, TURBISWITCH GA with emitter (TT-HDR) and receiver (TR-HDR) included

TECHNICAL FEATURES

TURBISWITCH GA 1

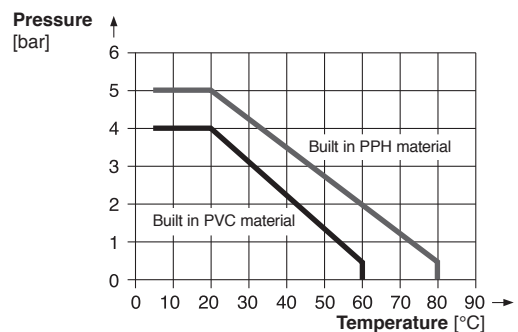
Material: stainless steel AISI 316L (EN 1.4404)
 Connections: welded, threaded or flanges
 Working Temperature : -10...+100 °C
 Working pressure: 10 bar maxi

OPTION

TURBISWITCH GA 1-F: material and connections made of AISI 316Ti (EN 1.4571)

TURBISWITCH GA 5

Material: PVC or PPH
 Connections: adhesive join (PVC), weld on (PPH), unions or flanges



TURBISWITCH GA 11

Material: stainless steel AISI 304 (EN 1.4301)
 Connections: weld on, aluminum loose flanges or stainless steel loose flanges PN10
 Working Temperature: -10...+100 °C
 Working pressure: 10 bar maxi

CODES NUMBER AND REFERENCES

Codes	References	DN	Materials	Connections		
422 110	TURBISWITCH GA 1 - Z7D	40	Stainless steel 316 L (EN 1.4404)	G 1 1/2"		
422 112	TURBISWITCH GA 1 - Z8D	50		G 2 "		
422 120	TURBISWITCH GA 1 - F5D	40		Flanges PN 10		
422 122	TURBISWITCH GA 1 - F6D	50				
422 124	TURBISWITCH GA 1 - F7D	65				
422 126	TURBISWITCH GA 1 - F8D	80				
422 128	TURBISWITCH GA 1 - F9D	100				
422 130	TURBISWITCH GA 1 - FAD	125				
422 500	TURBISWITCH GA 5 - VV 1 1	15			PVC	Unions
422 502	TURBISWITCH GA 5 - VV 1 2	20				
422 504	TURBISWITCH GA 5 - VV 1 3	25				
422 506	TURBISWITCH GA 5 - VV 1 4	32				
422 508	TURBISWITCH GA 5 - VV 1 5	40				
422 510	TURBISWITCH GA 5 - VV 1 6	50				
422 560	TURBISWITCH GA 5 - VV 1 7	65				
422 565	TURBISWITCH GA 5 - VV 1 8	80				
422 501	TURBISWITCH GA 5 - VV 2 1	15	PPH	Unions		
422 503	TURBISWITCH GA 5 - VV 2 2	20				
422 505	TURBISWITCH GA 5 - VV 2 3	25				
422 507	TURBISWITCH GA 5 - VV 2 4	32				
422 509	TURBISWITCH GA 5 - VV 2.5	40				
422 511	TURBISWITCH GA 5 - VV 2 6	50				
422 541	TURBISWITCH GA 5 - FF 1 1	15			PVC	Loose flanges
422 543	TURBISWITCH GA 5 - FF 1 2	20				
422 545	TURBISWITCH GA 5 - FF 1 3	25				
422 547	TURBISWITCH GA 5 - FF 1 4	32				
422 549	TURBISWITCH GA 5 - FF 1 5	40				
422 561	TURBISWITCH GA 5 - FF 1 6	50				
422 540	TURBISWITCH GA 5 - FF 1 7	65				
422 542	TURBISWITCH GA 5 - FF 1 8	80				
422 544	TURBISWITCH GA 1 - FF 1 9	100				
422 551	TURBISWITCH GA 5 - FF 2 1	15	PP	Loose flanges		
422 553	TURBISWITCH GA 5 - FF 2 2	20				
422 555	TURBISWITCH GA 5 - FF 2 3	25				
422 556	TURBISWITCH GA 5 - FF 2 4	32				
422 557	TURBISWITCH GA 5 - FF 2 5	40				
422 558	TURBISWITCH GA 5 - FF 2 6	50				
422 559	TURBISWITCH GA 5 - FF 2 7	65				
422 552	TURBISWITCH GA 5 - FF 2 8	80				
422 554	TURBISWITCH GA 1 - FF 2 9	100				
422 140	TURBISWITCH GA 11 - S3	25			Stainless steel 304 (1.4301)	Welded type
422 141	TURBISWITCH GA 11 - S4	32	Loose flanges, aluminium			
422 142	TURBISWITCH GA 11 - F3F	25				
422 143	TURBISWITCH GA 11 - F4F	32				
422 144	TURBISWITCH GA 11 - F3D	25				
422 145	TURBISWITCH GA 11 - F4D	32				
				Loose flanges, Stainless steel, PN10		

MOUNTING DUTIES

The armature includes one emitter and one receiver cross mounted.

Emitter and receiver must be always brought into horizontal alignment (*no deposits on lower part and no air fields on upper part*).

BAMO MESURES

22, Rue de la Voie des Bans - Z.I. de la Gare - 95100 ARGENTEUIL

Tél : (+33) 01 30 25 83 20 - Web : www.bamo.fr

Fax : (+33) 01 34 10 16 05 - E-mail : info@bamo.fr

Armatures for turbidity control
TURBISWITCH GA...

09-04-2015

422 I1 01 C

TUR

422-01/2