

Modem GSM / GPRS

GsM 25e



- Compact module
- M2M applications
- Supply required: 6.5...32 V DC
- 3 Inputs
- 1 output
- Including:
 - Serial cable
 - Antenna
 - Software

CONCEPT

Entirely dedicated to the wireless communication, the modem **GsM 25e** allows a simple and rapid integration of GSM / GPRS connectivity into machine to machine applications (*M2M*).

DESCRIPTION

The **GsM 25e** is a robust, reliable and long life product. Its very compact metal case makes it ideally adapted to onboard standards. This product also conforms to the automotive standards.

The **GsM 25e** modem is equipped with TCP/IP protocols as well as 3 inputs and 1 output. It includes an antenna, a serial Data cable for PC and software for a simple and easy configuration.

Optional flash memory extension and integrated shock detector associated with development tools, offer the possibility for the specific supplementary applications.

APPLICATIONS

In association with a **BamoBox SOLAR**, this modem allows a distant communication of information. When an alarm occurs on a **NivOil®** survey unit (*alarm unit on hydrocarbons separator*) the **GsM 25e** sent a message identifying the channel or separator concerned by the alarm (SMS message) including the name or identification TAG of the separator, the channel number and a memorized text.

CODE NUMBER AND REFERENCE

Code	Reference	Designation
248 01	GsM 25e	GSM / GPRS modem with antenna, serial data cable and configuration software

BAMO MESURES

22, Rue de la Voie des Bans - Z.I. de la Gare - 95100 ARGENTEUIL

Tél : (+33) 01 30 25 83 20 - Web : www.bamo.fr

Fax : (+33) 01 34 10 16 05 - E-mail : info@bamo.fr

Modem GSM / GPRS
GsM 25e

03-11-2014

248 I1 02 A

RE

248-02/1

TECHNICAL FEATURES

MODES, GSM / GPRS:

- E-GSM Quad-band 850/900/1800/1900 MHz

VOICE FEATURES:

- Voice (GSM mode)
- Telephony, Emergency Numbers 112
- Echo cancellation and noise reduction

DATA FEATURES:

- GPRS Class 10 (up to 4Rx / 2Tx)
- TCP/IP (PPP RFC, TCP Socket, UDP Socket, SMTP, POP3, FTP) Libraries
- SMS point to point MT/MO and SMS CB

INTERFACES:

- Antenna GSM: connector SMA-F
- Power supply: 6.5 V DC to 32 V DC (micro-FIT connector)
- RS232 + Audio via a female 15-pin Sub-D
- 3 opto-coupled inputs 3 V DC to 32 V DC / (micro-FIT connector)
- 1 open collector Output 60 V DC – 1mA / (micro-FIT connector)
- SIM card reader (SIM 3V - 1.8 V)
- Supply and Inputs / Output cables included

AVERAGE CONSUMPTION:

- GSM 850 / 900 MHz = 105 mA @ 12 V in communication
- GSM 1800 / 1900 MHz = 80 mA @ 12 V in communication
- Idle mode: 5 mA @ 12 V

ENVIRONMENTAL & MECHANICAL:

- Operating temperature: -20°C....+60°C
- Storage temperature: -30°C...+85°C
- IP31 aluminium case: Length 73 mm x Width 54 mm x Depth 25 mm
- Weight: 92 g

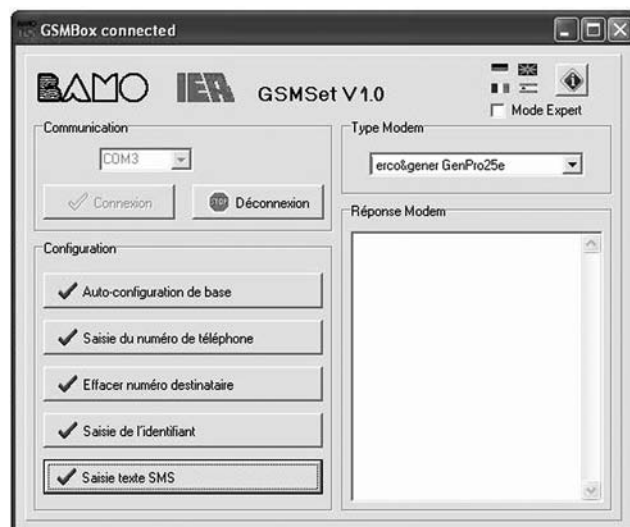
APPROVALS:

- R&TTE (Radio & Telecom. Terminal Equipment)
- Automotive approval: E24 10R-020250 ("E" label)

OPTIONS:

- Flash memory extension
- Shock detector
- Buzzer output
- GSM antenna (SMA-M)
- Serial Data cable - 15M/9F or Data/Audio cable -15M/9F/RJ9
- 230 V AC - 12 V DC power supply
- GenBlue 10e remote-supply Bluetooth® / RS232 adapter

SOFTWARE



BAMO MESURES

22, Rue de la Voie des Bans - Z.I. de la Gare - 95100 ARGENTEUIL

Tél : (+33) 01 30 25 83 20 - Web : www.bamo.fr

Fax : (+33) 01 34 10 16 05 - E-mail : info@bamo.fr

**Modem GSM / GPRS
Gsm 25e**

03-11-2014

248 I1 02 A

RE

248-02/2