

pH-METER & ORP-METER BAMOCOR 105



- pH or ORP configurable
- Universal and programmable
- Controlled by microprocessor
- Alphanumeric displayer
- Display back lighted LCD
- Simultaneous Measure / Temperature display
- Ranges: programmable 0 - 14 pH, ± 2000 mV
- Compensated temperature
 - Automatic by Pt 100 Ω probe or Manual
- Two 0/4 - 20 mA analogic output, galvanically isolated and configurable
 - Output 1: Measurement
 - Output 2: T°C or PID regulation
- 3 relay outputs:
 - 2 adjustables alarm with switching output or proportional regulation
 - 1 temporized output alarm or self cleaning



- 1 regulation input
- Housing
 - Enclosure box 72 x 144 **BAMOCOR 321 E**
 - Wall mounting IP 65 **BAMOCOR 321 M**
- OPTIONS**
 - J-Bus communication RS 422 or RS 485 digital links
 - 348 000 mesures data logger
 - Electromagnetic pump start

DESCRIPTION

The BAMOCOR series are easy-to-use microprocessor based controllers. Calibration and configuration is as easy as pushing a button. Calibration and configuration is done by a simple step-through menu for all settings. A single 16 alphanumeric characters back lighted LCD display is used to indicate the measures and temperature. It displays also the menu for the allocation of sets, the adjustment of the analog output, as well as all function modes. Analog output 4-20 mA is galvanically isolated and can be set over the measured range. These versions of our pH / mV meters allows to solve all problems of measure with or without automatic temperature compensation, more a RS 422 output module is available for communication between a computer and the BAMOCOR 105 including J-BUS protocole.

TECHNICAL CHARACTERISTICS

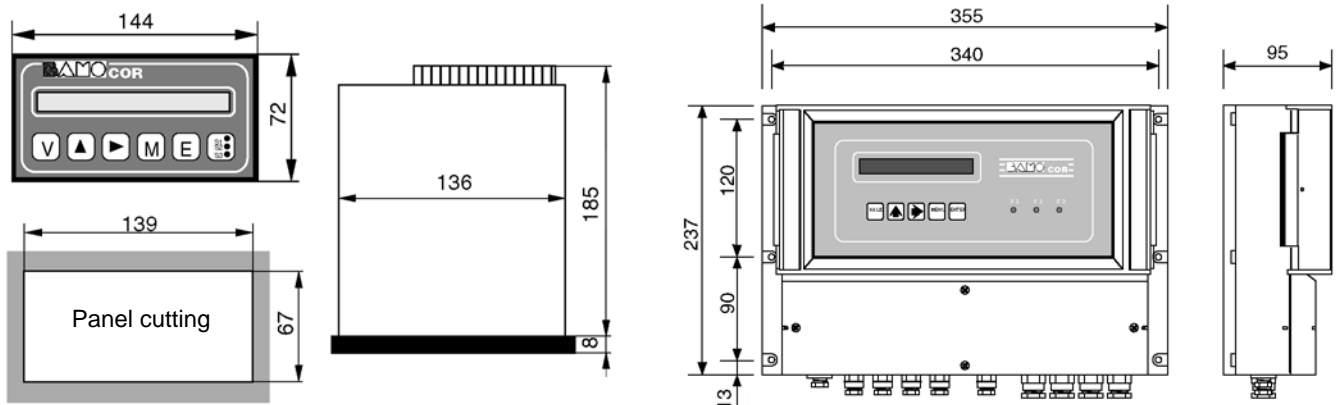
Displayer	: 16 alphanumeric characters - H = 9.22 mm - Back lighted
Visualization	: Red leeds of relays functions, located on front panel.
Programmation	: On front panel with 5 push-button keyboard - Password protected keyboard
Measure range	: pH-meter configuration: 0 up to 14 pH - mV-meter configuration: ± 1000 mV
Accuracy	: Measure: $\pm 0,3$ % - Temperature: $\pm 0,3$ °C
Input probe	: $>10^{13}$ Ω - Connection by 9054 coaxial connector
Compensation T °C	: Automatic: By Pt 100 Ω probe on a scale, 0 up to 100 °C : Manual: According to the working temperature choice, 0 up to 100 °C
Output relays	: 3 Volt free change over contact rated at 500 VA / 250 V / 2 A
Alarmes sets	: 2 independants alarm sets - Adjustable Hysteresis, 0 up to 100 % - Adjustable timer 0 à 9999 sec
Output relay default	: For too long injection - Adjustable timer 0 to 9 999 s.
Pulsing regulation	: Setting of cycle time, 0 up to 9999 s, high and low proportional bands, High and low dead zones.
P.I.D. regulation	: Adjustable proportionality, 0 up to 200 %, adjustables Integrale and Derived, 0 up to 999 secondes
Testing phase	: Neutralization of output switching, storage the last analogic output values.
Self cleaning programme	: Programming of cycles time and cleaning, neutralization of switching output, storage the last analogic output values.
Measure output	: 0/4 - 20 mA (600 Ω max.) Proportional at measure - Galvanic insulation included
Temperature / PID output	: 0/4 - 20 mA (600 Ω max.) On any range from 0 °C up to 100 °C - Galvanic insulation included
Measurement simulation	: By menu - Action on output measure, temperature, P.I.D.- Alarmes
Main power supply	: 230 VAC ± 10 % 50-60 Hz single phase - Consumption, 10 VA (117 V, 48 V, 24 V on request)
Enclosure box	: Dimensions (mm): 72 x 144 x 185 - Weight : 1100 g Protect: IP 40, front panel IP 65 - Material: Noryl, polycarbonat front panel. Connection: Dismountable screwed connector
Wall mounting box	: Dimensions (mm): 355 x 237 x 95 - Weight : 1900 g Protection: IP 65 - Material: ABS, front panel polycarbonat Connections: Terminal screw, input by plastic cable gland.
Temperature	: Stockage: -10 up to 70 °C - Functioning: -5 up to 50 °C

OPTIONS (not cumulable)

Communication	: J-BUS connection - Slave binary mode - RS 422 or RS 485 - 1200 up to 9600 bauds
Electromagnetic pump	: 50 up to 120 pulses /mn - Reed relay type - P.C. 100 VDC / 0,5 A / 10 VA - impulses 250 ms
Logger	: Averaged automatic registrement of measure in programmed interval. Maximum registremnts number: 348 000 (Exemple: 1 minute during = 6 months datas) Memory is automatically cleared after datas transfer to computer.

CODES AND REFERENCES

105 500	BAMOCOR 105 E	IP 40 enclosure box: 72 x 144
105 550	BAMOCOR 105 E/LOG	+ Logger option 348 000 registremnts
105 552	BAMOCOR 105 E/BUS	+ RS422 or RS485 option - J-BUS protocol
105 700	BAMOCOR 105 M	IP 65 wall mounting box
105 750	BAMOCOR 105 M/LOG	+ Logger option 348 000 registremnts
105 752	BAMOCOR 105 M/BUS	+ RS422 or RS485 option - J-BUS protocol
105 955	Relay for electromagnetic command pump.	



BAMO MESURES

13, rue Pasteur - 95 100 ARGENTEUIL - FRANCE
Tél : (+33) 01 30 25 83 20 - E-mail : info@bamo.fr
Fax : (+33) 01 34 10 16 05 - Site : http://www.bamo.fr

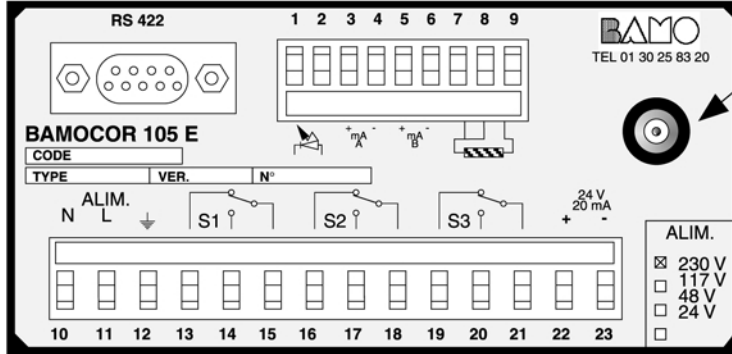
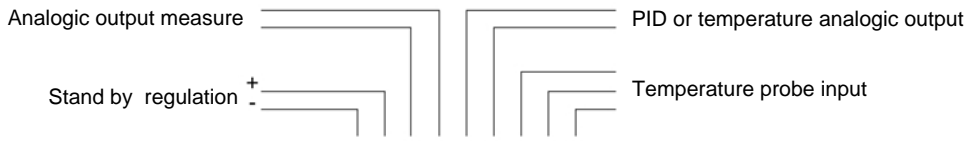
pH-Meter / mV-Meter
BAMOCOR 105

pH

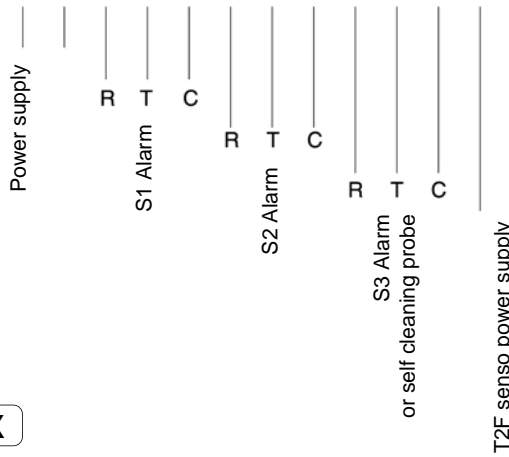
105/2

WIRERING

ENCLOSURE BOX

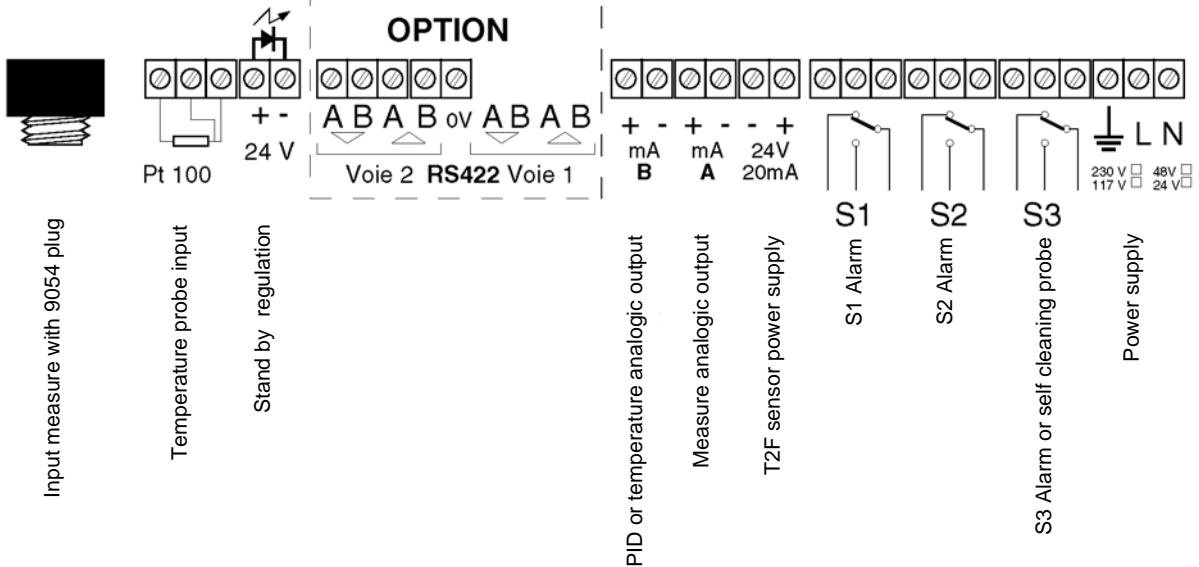


Measure input with 9054 plug



WALL MOUNTING BOX

The dismantling of cable gland allows the passage of the connector 9054



13, rue Pasteur - 95 100 ARGENTEUIL - FRANCE
Tél : (+33) 01 30 25 83 20 - E-mail : info@bamo.fr
Fax : (+33) 01 34 10 16 05 - Site : http://www.bamo.fr

28/01/2003

pH-Meter / mV-Meter
BAMOCOR 105

105 IT 01 D

pH

105/3

LOGGER & CORLOG

LOGGER option is available at the ordering. This option will be to add on a 4.00 minimal software version of BAMOCOR. Devices not supporting this version must be replaced.

For this option, each device is delivered with CORLOG interface (3.5" HD including the software for WINDOWS). This interface allows the dated treatment possible on standard softwares: Spreadsheet files or DataBase.

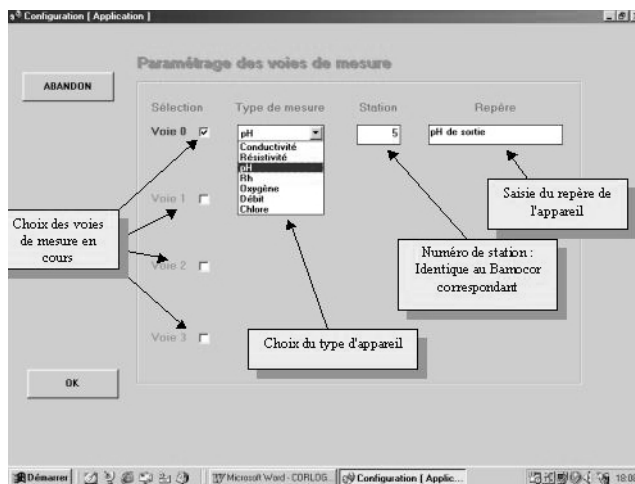
POSSIBILITY

LOGGER option allows:

- Uninterrupted automatic data-processing recording of measurements made by device.
This saving function is always active, (no stop possibility).
- Follow-up in real time of these measurements.
- Connection with a standard computer (PC)

CORLOG software allows:

- Automatic taking of recorded BAMOCOR values.
When the Unloading program started, the datas will be transmitted and memory cleared
- TESTLOG software installed with CORLOG allows the unloading of datas, without memory reset all, with possibility to make daily files with TESTLOG and a weekly file with CORLOG.
- Creating a device spreadsheet files for datas treatment
Example: Calculations, curves...
- Until 4 BAMOCOR line control.



Screen: "Setting of measures ways"

NECESSARY CONFIGURATION

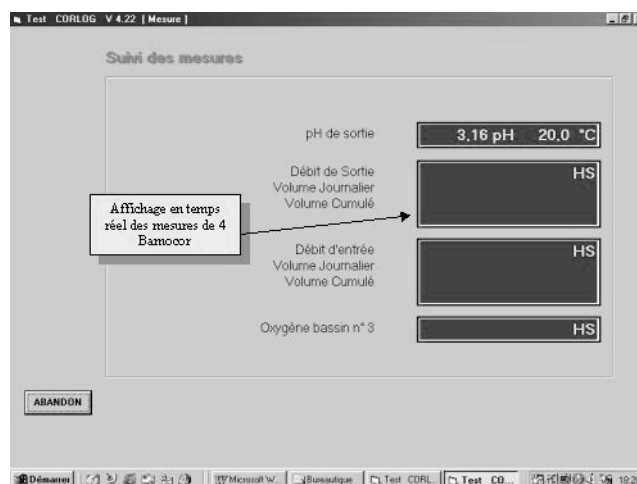
- A computer PC compatible
- Windows 3.1x, 95 or 98.
- Serie communication RS 422 (or RS 232 with converter BAMOTOP 239 RS422 / RS 232).
- Screen: SVGA 800 x 600, 65536 colors
- Spreadsheet or DataBase software, for datas treatment.

DELIVERED UNIT

- The BAMOCOR with its memory and RS 422 communication interface.
- CORLOG & TESTLOG softwares on 3.5" HD.

CHARACTERISTICS

- pH / rH and Temperature measures automatic recording
- Interval between 2 recordings: adjustable from 1 up to 60 minutes (average is made every second during interval).
- Real time displaying
 - * pH or mV measure
 - * T °C measure
- Maximum records numbers: 174 000



Screen: Measurements follow-up in real time

BAMOCOR
CORLOG
TESLOG
sont des marques BAMO

BAMOCOR MESURES

13, rue Pasteur - 95 100 ARGENTEUIL - FRANCE
Tél : (+33) 01 30 25 83 20 - E-mail : info@bamo.fr
Fax : (+33) 01 34 10 16 05 - Site : http://www.bamo.fr

pH-Meter / mV-Meter
BAMOCOR 105

pH

105/4