

# Needle valve A 32



- Made from metal bar stock
- Operating pressure: 413 bar Max.
- Temperature: 240 °C Max.

## APPLICATIONS

Designed for direct mounting on pipe for liquid, gas or steam, this shut-off valve can be used to isolate a pressure gauge.

## TECHNICAL FEATURES

### WET PARTS

Body	AISI 316
Stem thread	AISI 316
Needle	AISI 316
Sealing	PTFE (200 °C Max.)

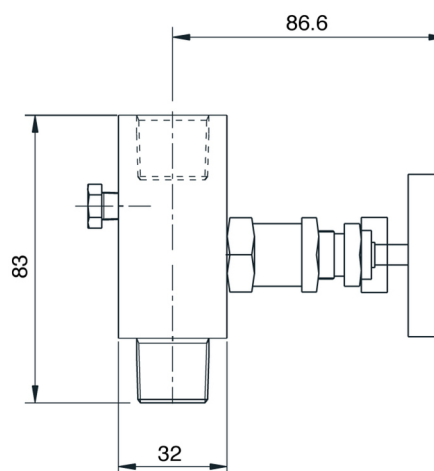
### FITTINGS

Gauge side	1/2" BSP-F
Process side	1/2" BSP-M
Drain plug	1/4" NPT - F

OPTIONS  Degreasing for application with oxygen

**EC Conformity: The instrument meets the legal requirements of the current European Directives**

## DIMENSIONS



## CODE NUMBERS AND REFERENCES

Needle valve, AISI 316, made from metal bar stock ,  
With drain plug 1/4" NPT - F

Code	Reference	Description
816 476	V 102	Fittings, 1/2" BSP-F to gauge and 1/2" BSP-M to process

*Options, certificates, other versions: on request*

# BAMO MESURES

22, Rue de la Voie des Bans · Z.I. de la gare · 95100 ARGENTEUIL

Tel +33 (0)1 30 25 83 20 Web [www.bamo.fr](http://www.bamo.fr)

Fax +33 (0)1 34 10 16 05 E-mail [info@bamo.fr](mailto:info@bamo.fr)

Needle valve  
A 32

13-11-2018

D-816.01-EN-AA

PR

816-01 /1