

ULTRASONIC LEVEL MEASURE EchoTREK

- Compact level transmitter.
- Measure from 0,25 to 6 meters.
- Programmable relay output (function or alarm)

GENERAL POINTS

Very compact, this ultrasonic sensor is very reliable and very accurate. It use HART protocol. To reproduce as accurately as possible, this sensor is equipped by QUEST+™ advanced recherche system. This processor allows it to identify and analyse a liquid surface, to obtain a reliable level measure. 4-20 mA output can be simply calibrated with a magnet key. For full programming, the SAP100 display unit allows all parameters access, bargraph function could be associated to measure or echo signal reception quality.

TECHNICAL CHARACTERISTICS

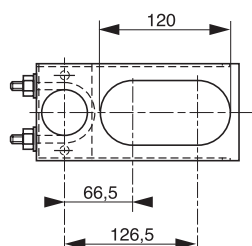
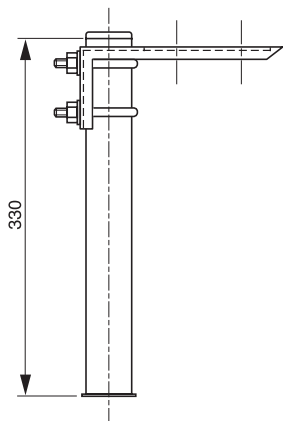
Housing	: Cast aluminium
Sensor	: PPh
Connection	: 2" BSP
Protection	: IP67 (housing) : IP68 (sensor)
Power supply	: 85...265 VAC /6 VA
Accuracy	: ±0,2%
Measure scale	: 0,25 to 6 meters
Measure angle	: 5°
Temperature range	: -30°C to +90°C
Signal frequency	: 80 kHz
Relay	: 250 VAC, 3A
Analogic output	: 4-20mA / 600 Ohms (galavanic isolation)
Electrical protection	: Class 1

MEASURE IN VENTURI CHANEL

In case of open chanel flume (venturi or "V"), the must be calibrated in factory, in case of SAP 100 option modul is not ordered. After setting **EchoTREK** on its holder, it remain only to adjust 4/20mA with magnet key.

CODES & REFERENCES

Code	Reference	Designation	Scale
597 100	STA-380-1	2" BSP mounting	0,25 to 6 m
597 900	SAP 100	Programming display unit	
755 501		Mounting part for DF 100 to DF 2500	



BAMO MESURES

22, Rue de la Voie des Bans - Z.I. de la Gare - 95100 ARGENTEUIL

Tél : (+33) 01 30 25 83 20 - Web : www.bamo.fr

Fax : (+33) 01 34 10 16 05 - E-mail : info@bamo.fr

Ultrasonic level measure
on open channel flume
EchoTREK

20-05-2008

755 I1 03 E

DEB

755-03/1