

Fittings - Flanges - Seals IDP / PDP

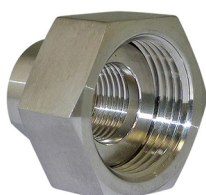
CAST-IRON FITTINGS, GALVANIZED, THREADED



Code	Ref. - Description
730 203	DN 15 - Galvanized cast-iron threaded fitting 1/2" FG
730 303	DN 25 - Galvanized cast-iron threaded fitting 1" FG
730 353	DN 32 - Galvanized cast-iron threaded fitting 1 3/4" FG
730 403	DN 40 - Galvanized cast-iron threaded fitting 1 1/2" FG
730 503	DN 50 - Galvanized cast-iron threaded fitting 2" FG
730 603	DN 65 - Galvanized cast-iron threaded fitting 2 1/2" FG

Nut + loose female threaded connection for replacing PVC parts of standard instrument. Each code corresponds to a set of 2 fittings.

AISI 316 FITTINGS, THREADED



Code	Reference - Description
730 105	DN 10 - AISI 316 Threaded fitting for PDP ND 10 - 3/8"
730 205	DN 15 - AISI 316 Threaded fitting for PDP ND 15 - 1/2"
730 305	DN 25 - AISI 316 Threaded fitting for PDP ND 25 / IDP 50 & 100 - 1"
730 355	DN 32 - AISI 316 Threaded fitting for IDP 150 & 200 - 1 1/4"
730 405	DN 40 - AISI 316 Threaded fitting for IDP 200 & 300 - 1 1/2"
730 505	DN 50 - AISI 316 Threaded fitting for IDP 600 to 1500 - 2"

Nut + loose female threaded connection for replacing PVC parts of standard instrument. Each code corresponds to a set of 2 fittings.

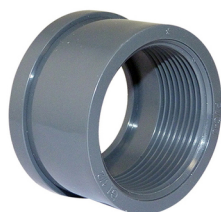
DUAL UNION FITTINGS



Code	Reference - Description
JA 540 206	DN 15 - PVC, female, for solvent welding / AISI 316 1/2" G
JA 540 208	DN 25 - PVC, female, for solvent welding / AISI 316 1" G
JA 540 209	DN 32 - PVC, female, for solvent welding / AISI 316 1 1/4" G
JA 540 210	DN 40 - PVC, female, for solvent welding / AISI 316 1 1/2" G
JA 540 211	DN 50 - PVC, female, for solvent welding / AISI 316 2" G
JA 540 212	DN 63 - PVC, female, for solvent welding / AISI 316 2 1/2" G

Mounting requires a transition piece (on request): solvent welding on standard fitting. Each code corresponds to one fitting; you need two fittings per instrument.

PVC LOOSE FITTING, FEMALE THREAD



Code	Reference - Description
AA 640 005	DN 10 - PVC loose fitting, female thread 16 x 3/8"
AA 640 006	DN 15 - PVC loose fitting, female thread 20 x 1/2"
AA 640 008	DN 25 - PVC loose fitting, female thread 32 x 1"
AA 640 009	DN 32 - PVC loose fitting, female thread 40 x 1 1/4"
AA 640 010	DN 40 - PVC loose fitting, female thread 50 x 1 1/2"
AA 640 011	DN 50 - PVC loose fitting, female thread 63 x 2"

Each fitting replaces the standard fitting. Each code corresponds to one fitting; you need two fittings per instrument.

BAMO MESURES

22, Rue de la Voie des Bans · Z.I. de la gare · 95100 ARGENTEUIL
 Tel +33 (0)1 30 25 83 20 Web www.bamo.fr
 Fax +33 (0)1 34 10 16 05 E-mail info@bamo.fr

Fittings - Flanges - Seals
IDP / PDP

13-11-2018

D-730.04-EN-AB

DEB

730-04/1

730

730

PP SMOOTH FITTING WITH NUT

Code	Reference - Description
730 202	DN 15 - PP smooth fitting for PDP ND 15
730 302	DN 25 - PP smooth fitting for PDP ND 25 / IDP 50 & 100
730 352	DN 32 - PP smooth fitting for IDP 150 & 250
730 402	DN 40 - PP smooth fitting for IDP 200 & 300
730 502	DN 50 - PP smooth fitting for IDP 600 & 1500
730 602	DN 65 - PP smooth fitting for IDP 2000 & 8000

Each code corresponds to a set of 2 fittings.

PVC FLANGE WITH PVC NUT

Code	Reference - Description
730 206	DN 15 - PVC Flange with PVC nut for PDP 15
730 306	DN 25 - PVC Flange with PVC nut for PDP ND 25 / IDP 50 & 100
730 356	DN 32 - PVC Flange with PVC nut for IDP 150 & 200
730 406	DN 40 - PVC Flange with PVC nut for IDP 200 & 300
730 506	DN 50 - PVC Flange with PVC nut for IDP 600 & 1500
730 606	DN 65 - PVC Flange with PVC nut for IDP 2000 & 8000

Each code corresponds to a set of 2 flanges.

PP FLANGE WITH PP NUT

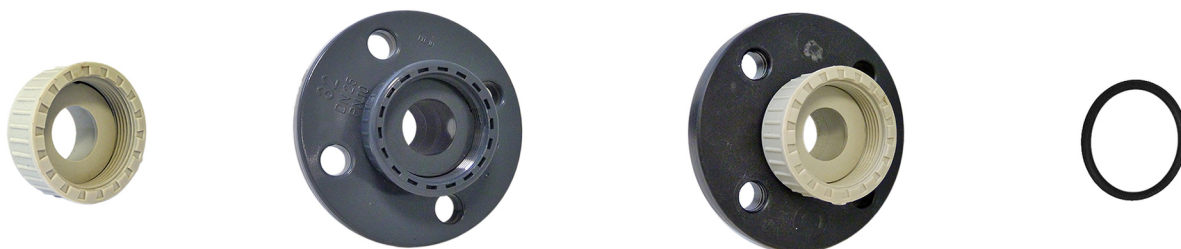
Code	Reference - Description
730 207	DN 15 - PP Flange with PP nut for PDP 15
730 307	DN 25 - PP Flange with PP nut for PDP ND 25 / IDP 50 & 100
730 357	DN 32 - PP Flange with PP nut for IDP 150 & 200
730 407	DN 40 - PP Flange with PP nut for IDP 200 & 300
730 507	DN 50 - PP Flange with PP nut for IDP 600 & 1500
730 607	DN 65 - PP Flange with PP nut for IDP 2000 & 8000

Each code corresponds to a set of 2 flanges.

FPM SEALS

Code	Reference - Description
731 630	FPM O-ring seals for PDP ND 10
731 631	FPM O-ring seals for PDP ND 15
731 632	FPM O-ring seals for PDP ND 25 / IDP 50 & 100
730 781	FPM O-ring seals for IDP 150 & 200
730 783	FPM O-ring seals for IDP 200 & 300
730 785	FPM O-ring seals for IDP 600 & 1500
730 787	FPM O-ring seals for IDP 2000 to 8000

Each code corresponds to a set of 2 seals.



BAMO MESURES

22, Rue de la Voie des Bans · Z.I. de la gare · 95100 ARGENTEUIL

Tel +33 (0)1 30 25 83 20 Web www.bamo.fr

Fax +33 (0)1 34 10 16 05 E-mail info@bamo.fr

Fittings - Flanges - Seals
IDP / PDP

13-11-2018

D-730.04-EN-AB

DEB

730-04/2