

FLOWMETER AND FLOW-SWITCH BV - BR



- BV-R: Reading + 1 switch
- B-R: Blind + 1 switch
- Adjustable switch set-point
- Realised in brass or stainless steel
- Fluid: water
- Vertical mounting
- Range from 0.1 up to 50 l/mn of water

PRINCIPLE

The flow monitors operate on the principle of the float type flow indicator. The float contains permanent magnets. The reed switch is mounted in an adjustable switch housing external to the flow circuit. The flowing medium raises the float in the direction of flow, as soon as the float with its permanent magnets reaches the set-point of the reed switch it will close the contact. As the flow increases, the float rises further i.e. the contact remains closed and thus ensure bistable switching.

MOUNTING

- The flow monitor must be installed vertically in the flow circuit.
- Flow direction is from bottom to top.
- Flow media must be free of particle contamination, otherwise the instruments will not function properly. We recommend the use of dirt filters type SF or SFD.
- The flow monitors must not be positioned in inductive fields. Minimum distance from iron parts : 10 mm.

FUNCTION RANGE

- The upper float ridge is the reading point.
- The scale reading is l/mn of water
- The switch is adjustable on all the range.
- The flow can exceed the range but there were more drop pressure.

TECHNICAL DATA

Pressure	: 10 bar BV-R 100 bar B-R and 300 bar B-R S.Steel
Drop pressure	: 0,01 - 0,2 bar BV-R 0,02 - 0,4 bar B-R
Temperature (max)	: 100°C (160°C on request)
Float	: Nickered brass or S.Steel 316 Ti
Connection	: Nickered brass or S.Steel 316 Ti
Glass	: Duran 50
Gasket	: NBR (brass) FPM (stainless steel)
Body	: Aluminium anodised
Accuracy	: ±5 % F. S.
Switch	: NO with no flow
Electrical connection	: DIN 43650

Options

Gasket	: FPM or EPDM
Switch	: Changeover contact /Ex
Air scale	: @ 1 bar absolu only (see next page)

BAMO MESURES

22, Rue de la Voie des Bans - Z.I. de la Gare - 95100 ARGENTEUIL

Tél : (+33) 01 30 25 83 20 - Web : www.bamo.fr

Fax : (+33) 01 34 10 16 05 - E-mail : info@bamo.fr

**FLOWMETER AND
FLOW-SWITCH
BV - BR**

04-12-2013

720 11 01 G

DEB

720-01/1

720

BV-... R : Indication + 1 switch

Type	Range l/mn water	R	Code number		Dimensions (mm)					Weight Gr
			Brass	S. Steel	D	L	B	T	SW	
BV - 1 R	0.1 - 1.5	¼"	720 200	720 400	43	132	67	14	32	625
BV - 3 R	0.2 - 3	¼"	720 210	720 410	43	132	67	14	32	625
BV - 8 R	0.3 - 8	¼"	720 220	720 420	43	132	67	14	32	625
BV - 12 R	1 - 12	¼"	720 230	720 430	43	132	67	14	32	625
BV - 18 R	2 - 18	½"	720 240	720 440	43	163	67	15	32	650
BV - 35 R	3 - 35	¾"	720 245	720 445	50	152	70	18	41	1 000
BV - 50 R	4 - 50	1"	720 250	720 450	50	152	70	18	41	1 000

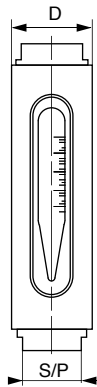
B -... R : Blind + 1 switch

Type	Range l/mn water	R	Code number		Dimensions (mm)					Weight Gr
			Brass	S. Steel	D	L	B	T	SW	
BR - 1 R	0.1 - 1,5	¼"	720 300	720 500	30	130	65	14	27	800
BR - 3 R	0.2 - 3	¼"	720 310	720 510	30	130	65	14	27	800
BR - 8 R	0.3 - 8	¼"	720 320	720 520	30	130	65	14	27	800
BR - 12 R	1 - 12	¼"	720 330	720 530	30	130	65	14	27	800
BR - 18 R	2 - 18	½"	720 340	720 540	30	148	65	15	27	850
BR - 35 R	3 - 35	¾"	720 345	720 545	40	152	70	18	34	1 350
BR - 50 R	4 - 50	1"	720 350	720 550	40	152	70	18	34	1 350

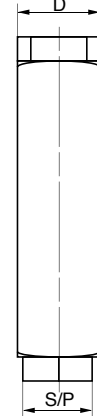
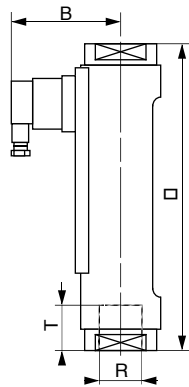
AIR SCALE

It is possible to get this kind of flowswitch with air scale at 1 Bar ABS. Take care of suddenly overpressure, that can destroy the flowswitch.

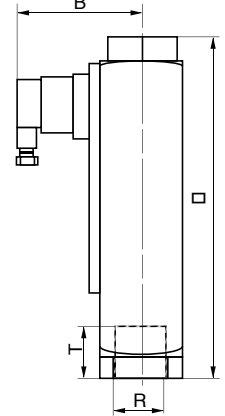
Type	Air range NI/mn
1 R	2 - 30
3 R	4 - 60
8 R	6 - 160
12 R	20 - 240
18 R	40 - 360
35 R	60 - 700
50 R	80 - 1 000



BV - R



B - R



SWITCHES

The arrow marking the switch-off point is positioned in line with the required flow rate, marked on the scale attached to the body. Adjustment is done by sliding the switch on a guide. A screw allows to keep its positioned.

The switch is realised with a reed ampoule enclosed in a polyamide block.

The output connection is made through an IP 65 connector with a PE 9 stuffing box.

NO (standard function / with no flow): You can change this function for NC by rotation of 180° the switch.

NO with no flow (Std)

max 230V / 1A / 50VA

Changeover (On request)

max 250V / 1.5A / 50VA

Ex

EEx m II T6 - **NO** - max 250V / 2A / 60 VA - **Changeover** - max 250V / 1A / 30VA

EEx ia IIC T6 - **NO** max 45V / 1A - **Changeover** - max 45V / 1A

BAMO MESURES

22, Rue de la Voie des Bans - Z.I. de la Gare - 95100 ARGENTEUIL

Tél : (+33) 01 30 25 83 20 - Web : www.bamo.fr

Fax : (+33) 01 34 10 16 05 - E-mail : info@bamo.fr

**FLOWMETER AND
FLOW-SWITCH
BV - BR**

04-12-2013

720 11 01 G

DEB

720-01/2