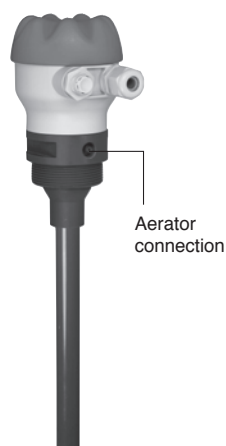


# Hydrostatic level controller MEMPRO S6



MEMPRO S6  
with rigid PVC stem



MEMPRO S6  
with flexible hose

- 4 adjustable switching points
- Convenient for aggressive and loaded fluids even viscous or / and sticky
- Inlet for flushing the stem with compressed air
- Range: up to 10 m Water Column
- Reliable, without mobile assembly

## APPLICATIONS

The controller **MEMPRO S6** is convenient for level controls on non-pressurised tank. The 4 switching points are adjustable over all the measuring range. This type of level transmitter is not affected with contaminated liquids or crystallizing fluids, as long as the stem is not tapped\*.

Fluids to control may be: Aggressive – Viscous – Dirt, crystallising or sticky

(\*): The purge air inlet accepts a pressure of up to 2.5 bar in order to flush all dirt on the stem from time to time. The device MEMPRO BL allows the automation of cleaning (*reset of measuring*) operations.

## PRINCIPLE

The MEMPRO S6 backpressure sensor functions in accordance with the Pitot static principle, i.e. current fill-level is deduced from hydrostatic pressure measured in a tube immersed in the liquid. When the level increases, the fluid rises inside the tube. The pressure of air trapped inside increases as well. This pressure corresponds to the height of the water column outside (*from the bottom tube end*). Four limit value-switching points can be assigned to the fill-level range via the setup menu. All switching points feature adjustable delay time, adjustable hysteresis and selectable NC/NO function.

MEMPRO S6 level controllers are suitable for aggressive liquids since the wetted parts are of PVC, PP or stainless steel for the stem and ceramic for the sensor. With a flexible hose, it is easy to have a remote electronic head, faraway of aggressive vapours. Venting connection integrated in the top: as an option, a venting module is connected for out-gassing and encrusting liquids refreshing; it resets the air column when media temperature changes during the process.

## TECHNICAL FEATURES

|                      |   |
|----------------------|---|
| Supply power:        | 24 V DC (20 to 30 V DC is possible)<br>Connected load approx. 2 VA  |
| Ambient temperature: | -20 to +60 °C   |
| Output relays:       | 3 contacts +1 floating limit value contact: 3 with common root and 1 floating contact (can be selected as a limit value contact or as a clock generator output) |
| Switching capacity:  | 250 V AC, 2.0 A / 30 V DC, 1.0 A  |
| Terminal housing:    | PBT, fibre-glass reinforced, IP 65 acc. EN 60 529   |
| Terminals:           | Screw terminals, max. 1.5 mm <sup>2</sup>   |
| Measuring cell:      | Ceramic diaphragm, with EPDM sealing  |
| Measuring accuracy:  | 0.5% ± 0.5 digits   |
| Display resolution:  | 1%  |
| Reset hysteresis:    | Adjustable from 0 to 99 %   |
| Indicators:          | 2 digits of 7 segments LED display<br>4 LED = status of each limit value relay  |
| Settings:            | Rotary switch and pushbutton  |
| CE Mark:             | In accordance with low-voltage directive (2006/95/EG),<br>EMC directive (2004/108/EG)   |

**BAMO MESURES**

22, Rue de la Voie des Bans - Z.I. de la Gare - 95100 ARGENTEUIL

Tél : (+33) 01 30 25 83 20 - Web : [www.bamo.fr](http://www.bamo.fr)

Fax : (+33) 01 34 10 16 05 - E-mail : [info@bamo.fr](mailto:info@bamo.fr)

Hydrostatic level controller  
**MEMPRO S6**

06-01-2015

592 I1 03 B

**NIV**

**592-03/1**

## CODE NUMBERS and REFERENCES

| Code             | Reference     | Designation  |
|------------------|---------------|--|
| 592 801          | MEMPRO S6 xXx | Hydrostatic level controller   |
| <i>Accessory</i> |               |  |
| 592 790          | BLG           | Automatic venting modules for MEMPRO 230 V AC, with 5 m long PVC tubing included |
| 592 791          | BLG           | Automatic Venting Modules for MEMPRO 24 V DC, with 5 m long PVC tubing included  |

**xXx:** To confirm on purchase order the model number, stem type and length.

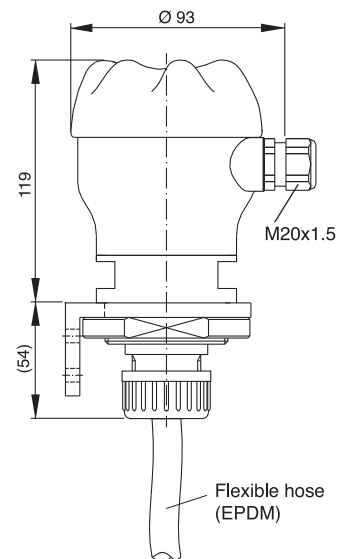
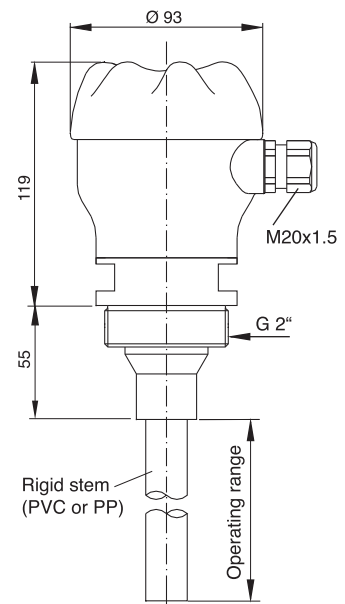
### Accessory

Complete automation system for compressed air timer: Timer for flushing dirt off the stem or resetting the atmosphere in the stem.

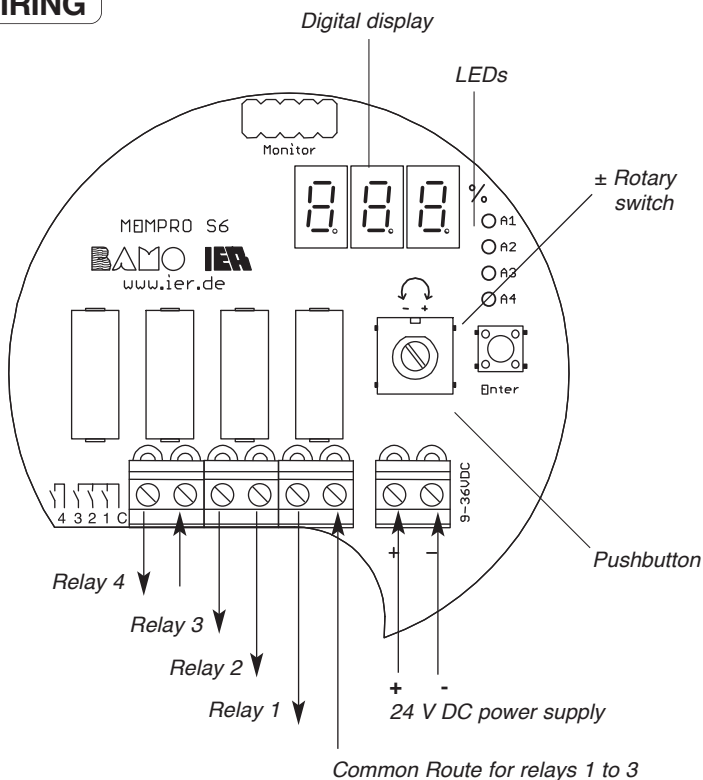
## SCALES – Operating ranges

| Model | Scale       | Minimal hose/stem length |
|-------|-------------|--------------------------|
| 1     | 1000 mm WC  | 200 mm                   |
| 2     | 2500 mm WC  | 500 mm                   |
| 4     | 4000 mm WC  | 800 mm                   |
| 10    | 10000 mm WC | 2000 mm                  |

## DIMENSIONS



## WIRING



**BAMO MESURES**

22, Rue de la Voie des Bans - Z.I. de la Gare - 95100 ARGENTEUIL

Tél : (+33) 01 30 25 83 20 - Web : [www.bamo.fr](http://www.bamo.fr)

Fax : (+33) 01 34 10 16 05 - E-mail : [info@bamo.fr](mailto:info@bamo.fr)

Hydrostatic level controller  
**MEMPRO S6**

06-01-2015

592 I1 03 B

**NIV**

**592-03/2**