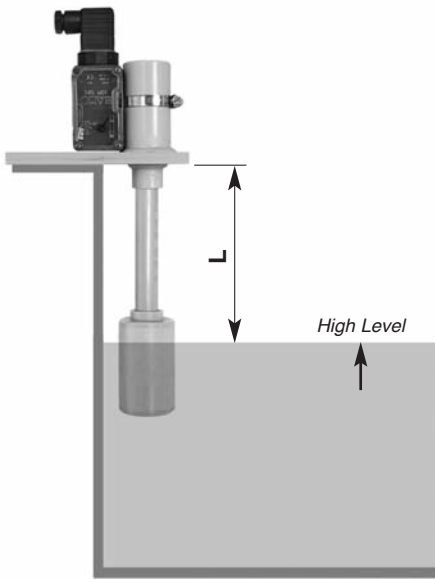


TANK TOP LEVEL CONTROLLER SECURICUVE



- Alarm signal on low level
- Positive active detection
- Compact unit
- Switch status: direct reading
- Construction: PPH or PVDF

APPLICATIONS

- Low level detection for tanks where a lack of chemical is an unsafe condition.
- Protection against overheating following evaporation or tank leaking, or defect on chemical solution refilling.

PRINCIPLE

A float (1) at the bottom of a stem (2) moves a magnet (3) inside the head housing (4). The fluid maintains the equipment (float, stem and magnet) in highest position (normal status). When the fluid level is going down, the equipment comes in lowest position -down to block on bearing (5). On this position, the level switch BSM (6) changes from normal status to alarm status (BSM: data-sheet 585-01).

To test the complete system, it is sufficient to push down the float to the lowest position or, to lift up the equipment. The pointer indicates the status and the alarm signal should be sent to the control panel.

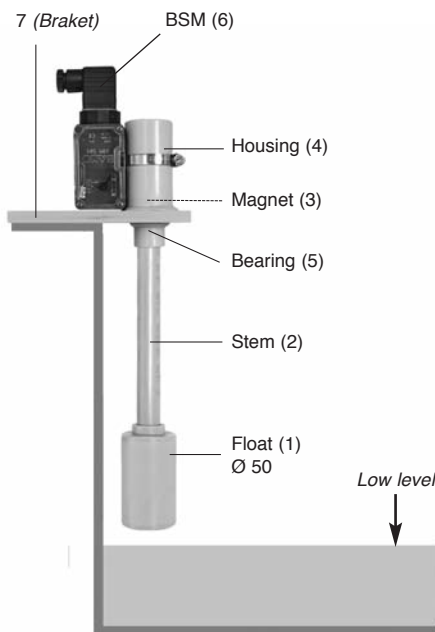
For a safe operating condition it would be better to test regularly the complete system.

TECHNICAL FEATURES

Float, stem, bracket, head: Or PPH or PVDF
 Temperature maxima: PPH → 105 °C
 PVDF → 140 °C

Level switch BSM 501 (*ordered separately*)

Rated voltage: 4 V ... 250 V AC, 4 V ... 30 V DC
 Rated current: 1 mA ... 3 A (AC or DC)
 Switching principle: Change over magnetic actuated micro switch
 Connector: Plug acc. DIN 43650, with PG 13.5
 Cable: Max. cross section 1,5 mm²
 Ambient temperature: -20...+90 °C
 Housing: Translucent polycarbonate, IP 65
 CE marks: In accordance with low Voltage Guidelines
 2006/95/EEC and EMV Guidelines 89/336/EEC



CODE NUMBERS AND REFERENCES

Code	Reference	Description
584 500	SECURICUVE-PPH	Level controller SECURICUVE, PPH
584 550	SECURICUVE-PVDF	Level controller SECURICUVE, PVDF
585 100	BSM 501	Level switch, changeover contact

Ordering information should precisely fix the trigger point distance L.
 L max.= 500 mm

BAMO MESURES

22, Rue de la Voie des Bans - Z.I. de la Gare - 95100 ARGENTEUIL
 Tél : (+33) 01 30 25 83 20 - Web : www.bamo.fr
 Fax : (+33) 01 34 10 16 05 - E-mail : info@bamo.fr

TANK TOP LEVEL CONTROLLER SECURICUVE

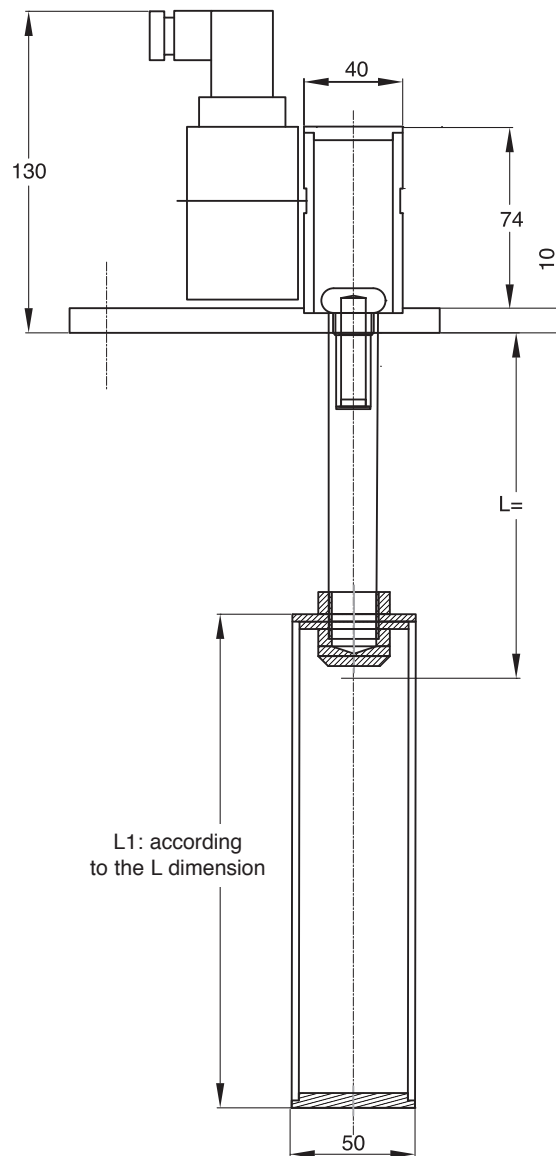
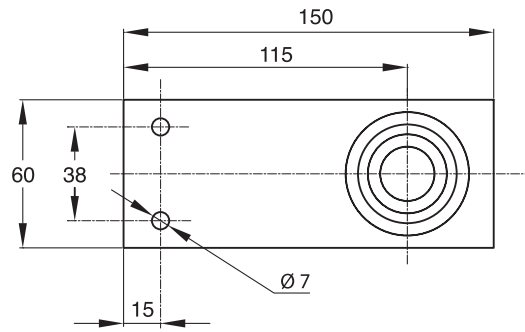
05-11-2013

584 I1 02 A

NIV

584-02/1

DIMENSIONS (/mm)



584

BAMO MESURES

22, Rue de la Voie des Bans - Z.I. de la Gare - 95100 ARGENTEUIL

Tél : (+33) 01 30 25 83 20 - Web : www.bamo.fr

Fax : (+33) 01 34 10 16 05 - E-mail : info@bamo.fr

**TANK TOP LEVEL CONTROLLER
SECURICUVE**

05-11-2013

584 I1 02 A

NIV

584-02/2