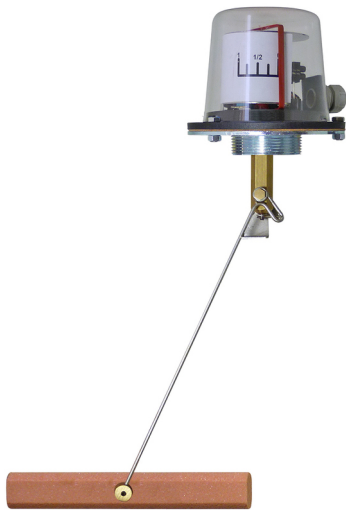


Level indicator and controller CF80 Series



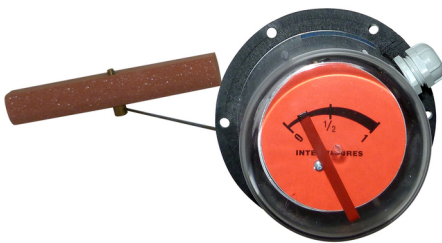
- Height from 150 to 650 mm
- Fitting: BSP 2", male
- Head housing: IP54
- 3 possible functions:
 - Direct reading on dial
 - With 1 to 3 contacts, potential free
 - Output signal: continuous resistive signal (Ω)

APPLICATIONS

These controllers for alarms on low, high levels, and transmitters of continuous level, are designed for indoor and small tanks

- Diesel in tanks
- Day-tanks
- Lubricating oil
- Glycol water
- Rainwater

Particularly suited for small storage tanks (150 to 650 mm high), e.g. on filling automation of tanks for diesel generators.



DESCRIPTION

Under the thrust of the fluid, the float transmits the level through a rod transmission to a vertical stem.

The stem actuates a pointer on the dial, the contacts or/ and a potentiometer for output resistive signal image of the level.

Gauge is mounted on the top of the tank.

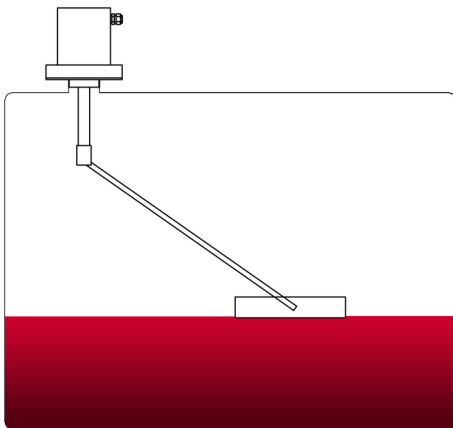
Instrument is available in various versions according to requirements:

- Direct reading of level on top or/ and side of gauge head.
- 1 to 3 contacts (2 way contact), high and low levels and/ or pump automation
- Output for continuous resistive signal

The complete system is supplied ready to install and to use.

Models JE80, CF80 and JLD are designed for tanks with a height of 150 to 500 mm.

Model JE80N is designed for tanks with a height of 150 to 650 mm.



TECHNICAL FEATURES

Materials	Steel, Nylon, brass, stainless steel
	Float: foamed PVC
	Flange seal: Cork gasket
Fitting	BSP 2", male
Head housing	IP 54
Dial	Above: Orange background; Graduations at 0, 1/2 and 1 (fig1.) Side: White background; Graduations at 0, 1/2 and 1 (fig.2)
Operating pressure	Atmospheric
Operating temperature	From 0 to 40 °C

BAMO MESURES

22, Rue de la Voie des Bans · Z.I. de la gare · 95100 ARGENTEUIL

Tel +33 (0)1 30 25 83 20 Web www.bamo.fr

Fax +33 (0)1 34 10 16 05 E-mail info@bamo.fr

Level indicator and controller
CF80 Series

13-11-2018

D-579.04-EN-AB

NIV

579-04/1

579

579

Contacts

Default setting:

Low level alarm: 20 % capacity (Change-over contact, 10 A, 230 V, potential free)

High level alarm: 85 % capacity (Change-over contact, 10 A, 230 V, potential free)

Filling function: ON at 40 % and OFF at 80 % capacity (2-way contact, 10 A, 230 V, potential free)

On request: Factory setting between 20 and 85 % capacity.

Output, resistive signal

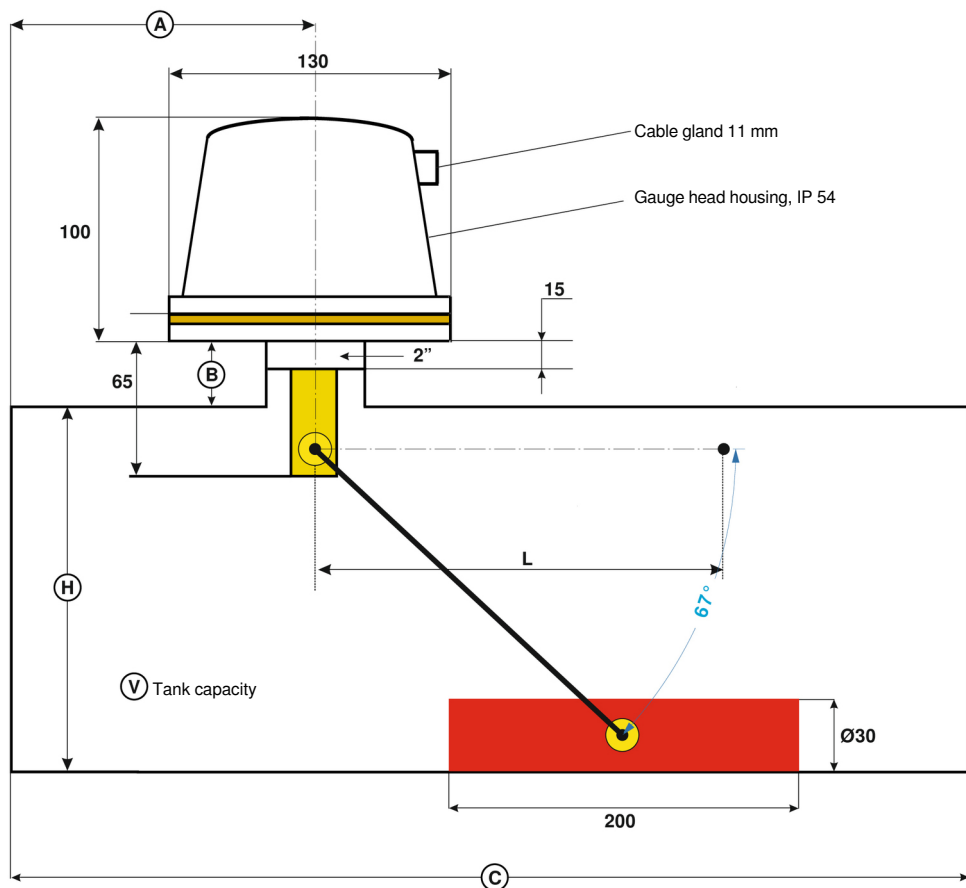
From 0 to 160 Ω (approx., $\pm 15\%$)

CODE NUMBERS AND REFERENCES

Code	Reference	Direct reading on dial		Output, Ω	Contacts		
		On top	On the side		LOW level	HIGH level	ON/ OFF
579 030	JE80			●			
579 032	JE80 1S			●	●		
579 034	JE80 2S			●	●	●	
579 040	JE80 N	●		●			
579 042	JE80 N-1S	●		●	●		
579 044	JE80 N-2S	●		●	●	●	
579 500	CF80 N	●	●		●	●	●
579 502	CF80 1S				●		
579 504	CF80 2S				●	●	
579 510	CF 80				●	●	●
579 518	JLD 80	●					

DIMENSIONS

Dimensional (not to scale)



Dimensions A, B, C, H and V (tank volume) must be confirmed on purchase order.
In case of a rectangular shaped tank, the width must be mentioned as well.

BAMO MESURES

22, Rue de la Voie des Bans · Z.I. de la gare · 95100 ARGENTEUIL

Tel +33 (0)1 30 25 83 20 Web www.bamo.fr

Fax +33 (0)1 34 10 16 05 E-mail info@bamo.fr

Level indicator and controller
CF80 Series

13-11-2018

D-579.04-EN-AB

NIV

579-04/2

579

579